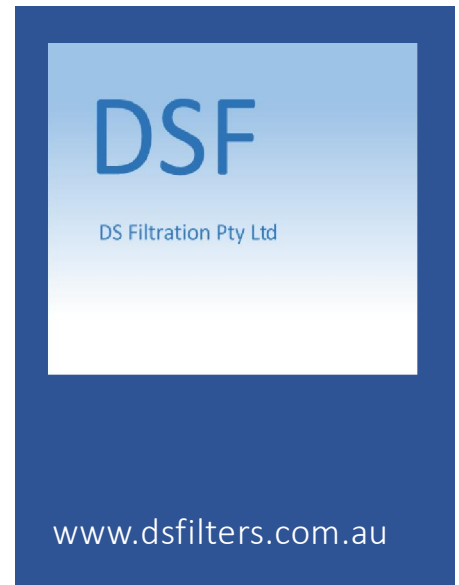


FP Series Centrifugal Water Separators

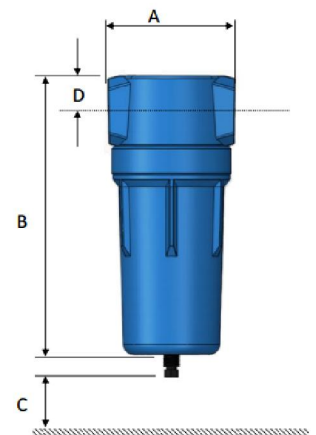
The FP Series centrifugal water separators use a cyclonic motion that pushes the water liquid out of the compressed air, it then gathers on the separator wall and when the condensate gathers enough mass it falls to the bottom of the separator bowl where is discharged by the autodrain.



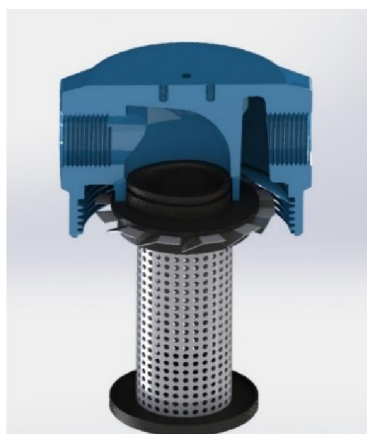
Call DS Filtration 03 8719 5249 for pricing.

Specifications

Model Number	BSP (inch)	Flow (scfm)	Weight (kg)	Dimensions (mm)			
				A	B	C	D
FP12WS	½"	54	2	87	212	60	21
FP30WS	1"	141	4	126	288	100	34
FP80WS	1 ½"	365	5	126	480	140	34
FP105WS	2"	532	9	166	575	150	50
FP150WS	2"	711	12	166	710	200	50
FP200WS	2 ½"	1040	15	166	950	300	50



Maximum working pressure 16bar
 Maximum temperature 60°C
 Nominal pressure drop less than 5kpa



Features and benefits

- Easy to install and maintenance free (no components require replacing).
- No refrigerant, desiccant or electricity required.
- Versatile, protecting an entire air system or a single tool.
- Cost effective, removing the bulk of the water from the compressed air.
- Long lasting with a solid aluminium body.